

SPECIFICATIONS – ABSOLU EOS 54

Christophe Barreau Performance Cruising Catamaran



GENERAL	
Boat name	ABSOLU
Model/Type	EOS 54 HULL #1
Lying at	Cogolin, France
Afloat or Ashore	Ashore
Builder	Marsaudon Composites, Lorient, France
Designer	Christophe Barreau/Naval Architect; Designers: Pierre Henri Barbé/Pascal Hauet; Interior Design: Hervé Couedel / Anne Goasguen
Year Launched	2016
Length Overall	16.45m
Length Waterline	16.45m
Beam	8.48m
Draught min/max	1.4m / 3.0m
Air Draught	24.75m
Displacement	14T (16T max)
Empty weight	12.5T
Average – topspeed	10-18 knots
Keel/Board type	Daggerboard
Steering	Textile lines and returns on 2 carbon wheel helms
Hull No / Series No	Hull #1
CE No + HIN Number	
Flag	France

ANASAZI LTDA

James M. Burwick
jamesburwick@anasazi-ltda.com
(+55) 12 9 9676 6323 WhatsApp
www.anasazi-ltda.com

BUILD MATERIAL	
Hulls	Foam Core Vinylester Resin Infused
Decks/Cabins	Foam Core Vinylester Resin Infused
Bulkheads	
Cross-beams	Carbon cross (forward beam and compression beam): 29,200
Anti-osmosis system	
Last date antifouled	

RIGGING + SAILS	
Type of rig	Sloop, Fixed 22.80m carbon mast (bare weight 260kg) with fiber rigging: 61,315; Staysail on furler: 8,148
Mainsail	101 sq meter Hydranet
Sail Battens	Full
Sail Cover	Lazy Bag
Furling Jib	64.5 sq meter Hydranet Profurl
Gennaker/Screecher	22 sq meter on furler
Storm Jib	9 sq meter
Other foresails	
Spinnaker	185 sq meter asymmetrical
Spi-launcher	
Reefing system main	Slab Reef
Reefing system jib	Profurl
Main sheet system	Line to clutch to winches
Head-sail furler	Profurl
Sheet winches	Harken
Halyard winches	Harken Electric
Rope Stoppers	Yes
Mast	Lorima Carbon Mast
Boom	Aluminum
Spinnaker Pole	
Whiskerpole	
Bowsprit	Carbon
Standing Rigging	Aramid
Running Rigging	Dyneema
Mast lowering system	not applicable

ACCOMMODATION	
Cabins	6
Bunks	12 (5 doubles + 2 singles)
Sheets	Complete bedding
Headroom bridged	
Headroom hull	
Galley Location	Galley Up
Cooker	Gas - 3 burner
Oven/Grill	Gas
Gas bottle(s)	
Cutlery	12 sets
Worktop	
Sink	Double
Fridge/box	2 @ 80L

ANASAZI LTDA

James M. Burwick
jamesburwick@anasazi-ltda.com
(+55) 12 9 9676 6323 WhatsApp
www.anasazi-ltda.com

Freezer	Yes
Shower	3
WC type(s)	3 - 1 manual, 2 electric
Washbasin(s)	Yes
Lighting	LED
Lockers	
Hanging lockers	
Ceiling lining	
Hullside lining	
Chart table	Yes
Navigation tools	Yes

ENGINE – INSTALLATION	
Engine(s)	2 @ Yanmar 57HP
Build-year/1st fitted	2016
Date last serviced	2022
Engine hours	1900 hrs
Power-HP / LKW	57HP/41.9KW
Cylinders	4
Drive System	Saildrive
Propeller	3 blade folding
Fuel	Diesel
Fuel tank	2 @ 200L
Consumption / hour	4L / hour
Average – topspeed	7-10 knots
Bowthruster	No

MECHANICAL	
Water – supply	Pressure
Water tank(s)	4 @ 215L
Seawater – pumps	Bilge pumps
Water maker	DUO 100L/hour 12V
Water heater	2 @ 75L
Holding Tank	2 @ 70L
Heating	
Cockpit shower	Yes
Stereo System	Bluetooth Fusion Pandora
S.S.B. Radio	

ELECTRONICS	
Battery(ies)	1 @ windlass, 2 @ engine, 3 @ service
110/220V Charger	Cristec 12v 40 amp
Solar Panel(s)	4 @ 250w
Generator	no
Alternator	2 @100amp
Wind/Water Generator	Watt and Sea generator on transom (600W): 7,214
Shore power	yes
Nav. Lights	LED
Other	Mastervolt 12 -220v

ANASAZI LTDA

James M. Burwick
jamesburwick@anasazi-ltda.com
(+55) 12 9 9676 6323 WhatsApp
www.anasazi-ltda.com

INSTRUMENTS	
Compass	yes
Hand bearing compass	
Autopilot	Raymarine
Echosounder	Raymarine
Log/speed	Raymarine
Windset	Raymarine
Navtex	
VHF	SD Marine
Satellite phone	
GPS	Raymarine
Chartplotter	Raymarine
Radar	
Binoculars	
Charts	Electronic
Laptops	

SAFETY	
Pulpit	Yes
Pushpit	Yes
Lifelines	Yes
Boarding ladder	1
Safety harness	12
Life jacket(s)	12
Danbuoy	Yes
Life raft	2 @ Zodiac 6 pax Container
EPIRB	Yes
Distress Signals	Yes
Harnesses	
Escape hatch(es)	2
First-aid kit	Yes
Fire Extinguishers	5 @ 2kg, 2 @ engine room automatic
Fire Blanket	Yes
Gas detector	Yes
Radar reflector	Yes
Bilge pump(s)	Yes
Emergency steering	Yes
Fog horn	Yes

ANASAZI LTDA

James M. Burwick
jamesburwick@anasazi-ltda.com
(+55) 12 9 9676 6323 WhatsApp
www.anasazi-ltda.com

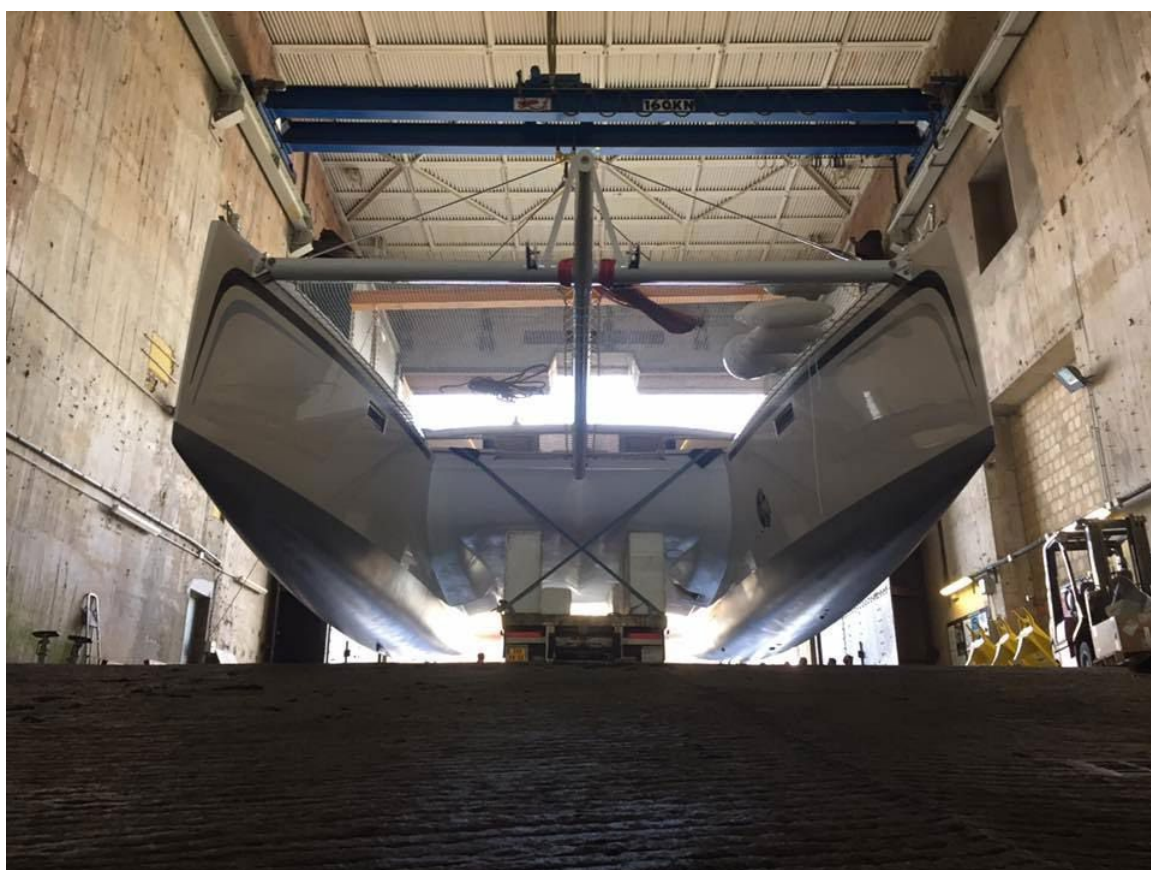
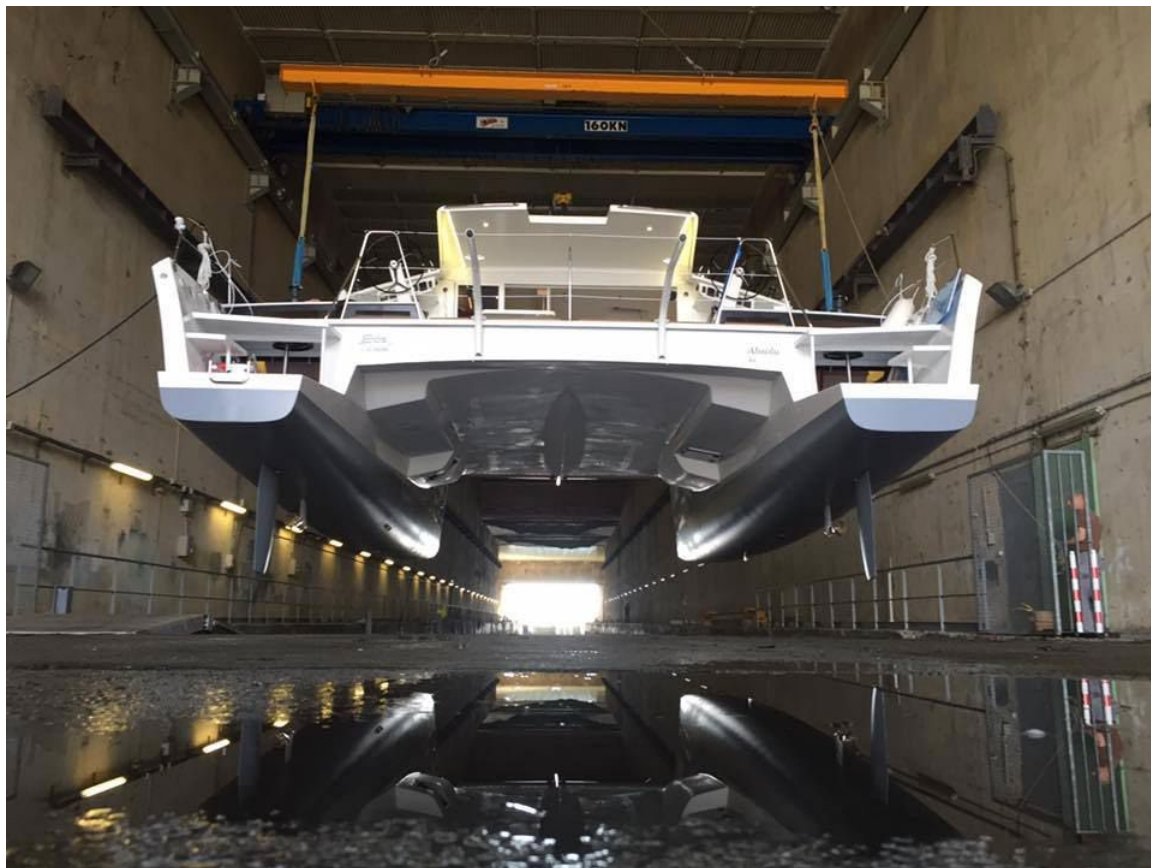
DECK EQUIPMENT	
Deck hatches	Yes
Opening portholes	Yes
Sprayhood	
Cockpit tent	Hard top plus fabric side panels
Sun awning	Yes
Cockpit table	yes
Cockpit cushions	yes
Fenders	2 balls, 3 @ 80cm, 4 @ 60cm
Mooring lines	4 @ 25m, 2 @ 50m
Gangway	Yes 2.50m
Boat Hook	Yes
Bucket	Yes
Sea Anchor	
Anchor(s)	3 anchors. Main anchor 30kg
Anchor Rode	60m 16mm
Anchor Chain	40m 10mm
Anchor winch	12v 2000 watts

DINGHY	
Build Material	3D Tender Aluminum bottom
Length x beam	3.40m
Outboard + build year	9.9 2T short shaft 9.9HP CMHA electric start
Sailrig	No
Oars	Yes
Davits	Yes



ANASAZI LTDA

James M. Burwick
jamesburwick@anasazi-ltda.com
(+55) 12 9 9676 6323 WhatsApp
www.anasazi-ltda.com



ANASAZI LTDA

James M. Burwick
jamesburwick@anasazi-ltda.com
(+55) 12 9 9676 6323 WhatsApp
www.anasazi-ltda.com



ANASAZI LTDA

James M. Burwick
jamesburwick@anasazi-ltda.com
(+55) 12 9 9676 6323 WhatsApp
www.anasazi-ltda.com



ANASAZI LTDA

James M. Burwick
jamesburwick@anasazi-ltda.com
(+55) 12 9 9676 6323 WhatsApp
www.anasazi-ltda.com



ANASAZI LTDA

James M. Burwick
jamesburwick@anasazi-ltda.com
(+55) 12 9 9676 6323 WhatsApp
www.anasazi-ltda.com



ANASAZI LTDA

James M. Burwick
jamesburwick@anasazi-ltda.com
(+55) 12 9 9676 6323 WhatsApp
www.anasazi-ltda.com



ANASAZI LTDA

James M. Burwick
jamesburwick@anasazi-ltda.com
(+55) 12 9 9676 6323 WhatsApp
www.anasazi-ltda.com



ANASAZI LTDA

James M. Burwick
jamesburwick@anasazi-ltda.com
(+55) 12 9 9676 6323 WhatsApp
www.anasazi-ltda.com



ANASAZI LTDA

James M. Burwick
jamesburwick@anasazi-ltda.com
(+55) 12 9 9676 6323 WhatsApp
www.anasazi-ltda.com



ANASAZI LTDA

James M. Burwick
jamesburwick@anasazi-ltda.com
(+55) 12 9 9676 6323 WhatsApp
www.anasazi-ltda.com



ANASAZI LTDA

James M. Burwick
jamesburwick@anasazi-ltda.com
(+55) 12 9 9676 6323 WhatsApp
www.anasazi-ltda.com



ANASAZI LTDA

James M. Burwick
jamesburwick@anasazi-ltda.com
(+55) 12 9 9676 6323 WhatsApp
www.anasazi-ltda.com



ANASAZI LTDA

James M. Burwick
jamesburwick@anasazi-ltda.com
(+55) 12 9 9676 6323 WhatsApp
www.anasazi-ltda.com



ANASAZI LTDA

James M. Burwick
jamesburwick@anasazi-ltda.com
(+55) 12 9 9676 6323 WhatsApp
www.anasazi-ltda.com



ANASAZI LTDA

James M. Burwick
jamesburwick@anasazi-ltda.com
(+55) 12 9 9676 6323 WhatsApp
www.anasazi-ltda.com



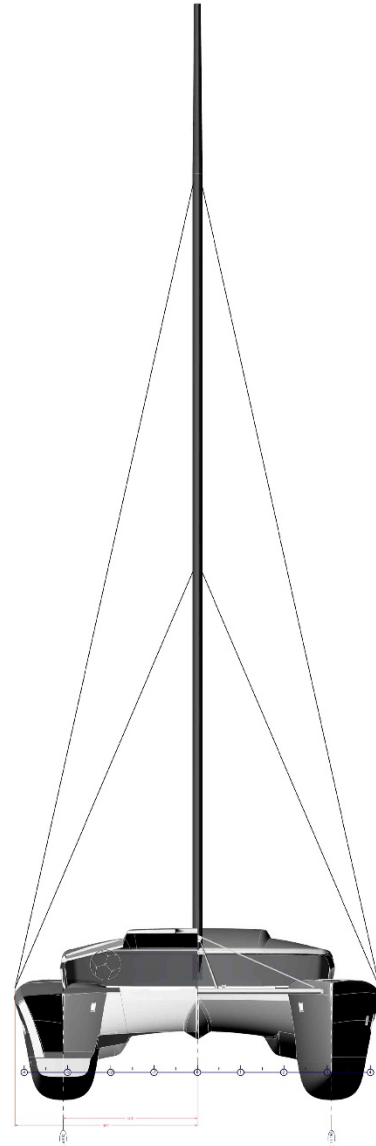
ANASAZI LTDA

James M. Burwick
jamesburwick@anasazi-ltda.com
(+55) 12 9 9676 6323 WhatsApp
www.anasazi-ltda.com





Voilure	
Surfaces et cotes projetées	
Grand'Voile	101 m ²
Solent enrouleur	64.5 m ²
Spi assy capelage	185 m ²
Spi de tête petit temps	230 m ²
Trinquette emmagasineur	24 m ²
I	18.55 m
J	6.50 m
P	20.80 m
E	6.65 m
Mât fixe Carbone Lorima	
Longueur profil	22.70 m
Quête	2°



Caractéristiques générales

Déplacement <i>Max</i>	16 100 kg
Longueur hors tout	16.45 m
Longueur à la flottaison	16.45 m
Bau Max	8.48 m
Entre-axe flotteurs	3.10 m
Moment de redressement max.	49 T.m
Gz max	3.02 m
Tirant d'eau	3.05 m
Tirant d'air	24.70 m
Motorisation	2 x 55 CV
Catégorie de conception	A